

HELP IN CHOOSING : Coilers with cranks

Model Code	Dimensions	Weight	Flange Ø	Barrel Ø	Usable width	Outlets	Wheels	Material	Indicative capacity according to cable Ø					
									5 mm	7 mm	10 mm	15 mm	20 mm	30 mm
EM050	l280xP185xH360 mm	1,7 kg	280 mm	105 mm	90 mm	-	-	Plastic coated galvanized steel frame and sides	70 m		50 m	20 m		
EM050P						4 sockets 2P-T	-		70 m		50 m	20 m		
EM060	l280xP190xH365 mm	1,2 kg	275 mm	100 mm	105 mm	-	-	Steel frame, plastic drum		100 m	60 m	30 m		
EM100	l550xP380xH625 mm	17 kg	475 mm	250 mm	290 mm	-	-	Steel frame and side panels with epoxy finish			100 m	57 m	42 m	21,5
EM100R				250 mm	290 mm	-	Supplied with 4 wheels Ø 80 mm				100 m	57 m	42 m	21,5
EM230	l540xP440xH465 mm	13,85 kg	398 mm	150 mm	350 mm	-	-				230 m	150 m	80 m	36 m
EM230R		16,35 kg		150 mm	350 mm	-	Supplied with 4 wheels Ø 100mm, 2 of which lock				230 m	150 m	80 m	36 m
EM320	l680xP440xH465 mm	14,4 kg	395 mm	147 mm	485 mm	-	-				320 m	210 m	120 m	52 m
EM320R		16,9 kg		147 mm	485 mm	-	Supplied with 4 wheels Ø 100mm, 2 of which lock				320 m	210 m	120 m	52 m



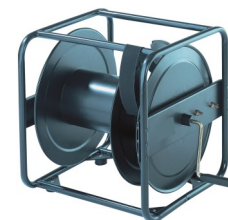
EM050 - EM50P



EM060



EM100 - EM 100R



EM230 - EM230R



EM320R